



BODYSWEET

**SWIMWEAR
& GYMWEAR
CATALOGUE**

SUMMER 21/22

BODYSWEET

Index

What to expect this Summer!

1. **Introduction**
2. **How we work & what we offer**
3. **Catalogue - The Popsicle Collection**
 - Ladies swimsuits
 - Ladies gymwear/ athleisure wear
 - Kids swimwear
4. **Colour availability**
5. **Size guide**
6. **Contact details**

1. Introduction


Bodysweet was created to promote body positivity and inclusivity. Bodysweet is a Cape Town born and based swimwear and gymwear/ athleisure brand for ladies and kids. With all items being produced locally, we also promote job creation and community upliftment.

With our own production line, we are able to produce our own as well as custom garments.

We are able to assist with:

- Ready made garments
- Pattern making
- Sampling
- Production runs
- Delivery of finished garment

At Bodysweet we believe, "Every BODY is welcome."

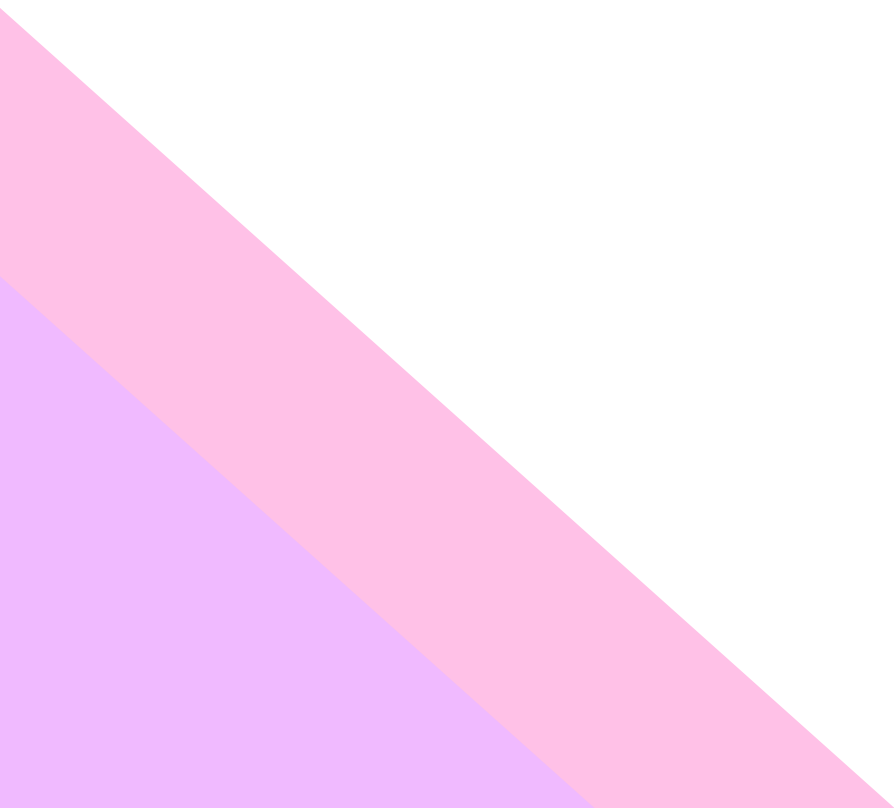


2. How we work & what we offer

At Bodysweet we are able to offer entrepreneurs and businesses the following services:

- Pattern making & grading
- Sampling
- Garment cutting
- Manufacturing
- Delivery of finished garments

We are here to make this process as seamless as possible. We offer low quantity, high quality orders, on trend and customizable designs. We value transparency and customer satisfaction.



3. CATALOGUE



LADIES SWIMWEAR

THE POPSICLE COLLECTION

LADIES SWIMWEAR

BODYSWEET SUMMER 2021



PURPLE FREEZE

Description: Boob tube top with elastic in top and bottom. High waisted bottom with medium bum coverage.

Padding: Optional

Reversible: Optional

Hardware: None.

Material composition: Lycra (Nylon 80% and 20%) with lining.

Colours: Available in various colours

RAINBOW FRILL

Description: Ladies crop with 3 colour inset and mesh inset high waisted bikini. Full bum coverage.

Padding: Yes

Reversible: No

Hardware: No.

Material composition: Lycra (Nylon 80% and 20%) with mesh.

Colours: Available in various colours



THE POPSICLE COLLECTION

LADIES SWIMWEAR

BODYSWEET SUMMER 2021



BLUEBERRY ICE-CREAM

Description: low v-line neck one piece with black bottom and white top. Low cut back.

Padding: No.

Reversible: No.

Hardware: No.

Material composition: Lycra (Nylon 80% and 20%) with lining

Colours: Available in various colours.

PLUMSICLE

Description: Two piece body string tie bikini and crop top with open bottom

Padding: Optional

Reversible: No

Hardware: No.

Material composition: Lycra (Nylon 80% and 20%) with lining

Colours: Available in various colours



THE POPSICLE COLLECTION

LADIES SWIMWEAR

BODYSWEET SUMMER 2021



ICEY POP

Description: Triangle bra halter neck, with bikini bottom with string ties on side. Minimum bum coverage.

Padding: Optional

Reversible: No.

Hardware: None.

Material composition: Lycra (Nylon 80% and 20%) with lining

Colours: Available in various colours

BLACKCURRENT & VANILLA ICE-CREAM

Description: low v-line neck one piece with black bottom and white top. Low cut back.

Padding: No.

Reversible: No.

Hardware: No.

Material composition: Lycra (Nylon 80% and 20%) with lining

Colours: Available in various colours



THE POPSICLE COLLECTION

LADIES SWIMWEAR

BODYSWEET SUMMER 2021



MANGO POP

Description: Two piece front tie & high waisted bikini bottom

Padding: Optional

Reversible: No

Hardware: None

Material composition: Lycra (Nylon 80% and 20%) with lining

Colours: Available in various colours

BLACKBERRY POP

Description: Ladies box bra and high waisted bikini

Padding: Optional

Reversible: No

Hardware: No

Material composition: Lycra (Nylon 80% and 20%) with lining

Colours: Available in various colours



3. CATALOGUE



LADIES ATHLEISURE WEAR

THE POPSICLE COLLECTION

LADIES ATHLEISURE/ GYM WEAR

BODYSWEET SUMMER 2021



LONG LENGTH TIGHTS OLIVE & WHITE

Description: Ladies long length gym Tights with side pocket.

Reversible: No

Material composition: Lycra (Nylon 80% and 20%)

Colours: Available in various colours

CROSS BACK OLIVE BRA

Description: Two layered sports crop bra with cross straps

Reversible: No

Material composition: Lycra (Nylon 80% and 20%) with lining.

Colours: Available in various colours



THE POPSICLE COLLECTION

LADIES ATHLEISURE/ GYM WEAR

BODYSWEET SUMMER 2021



LONG LENGTH TIGHTS BLACK & WHITE

Description: Ladies long length gym Tights with side pocket.

Reversible: No

Material composition: Lycra (Nylon 80% and 20%)

Colours: Available in various colours

CROSS BACK BLACK BRA

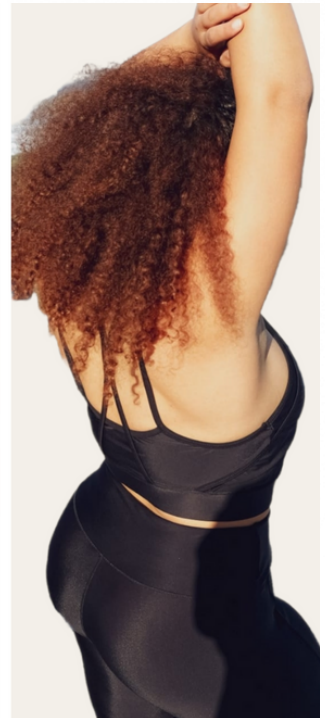
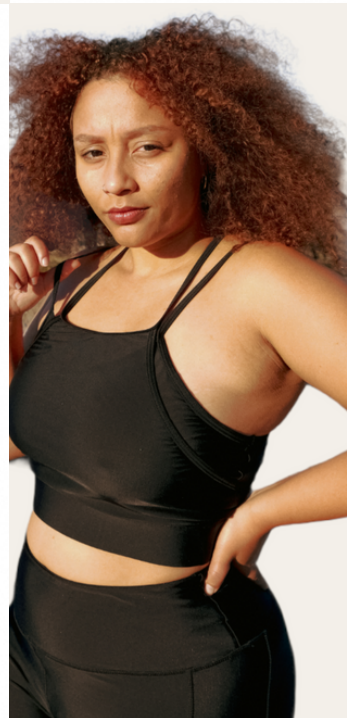
Description: Two layered sports crop bra with cross straps

Reversible: No

Hardware: No

Material composition: Lycra (Nylon 80% and 20%) with lining

Colours: Available in various colours



THE POPSICLE COLLECTION

LADIES ATHLEISURE/ GYM WEAR

BODYSWEET SUMMER 2021



LONG LENGTH TIGHTS BLUE & TANGERINE

Description: Ladies long length gym Tights with side pocket.

Reversible: No

Material composition: Lycra (Nylon 80% and 20%)

Colours: Available in various colours

3. CATALOGUE



KIDS SWIMWEAR

THE POPSICLE COLLECTION

KIDS SWIMWEAR

BODYSWEET SUMMER 2021



STRAWBERRY FRILL

Description: Frill two piece set

Reversible: No

Hardware: None

Material composition: Lycra (Nylon 80% and 20%) with lining

Colours: Available in various colours

PEACHY POP

Description: Kiddies two piece crop top and high waisted bottom.

Reversible: No

Hardware: Rings and clips

Material composition: Lycra (Nylon 80% and 20%) with lining

Colours: Available in various colours



THE POPSICLE COLLECTION

KIDS SWIMWEAR

BODYSWEET SUMMER 2021



MINT LOLLY

Description: Two piece front tie top with side tie bikini bottoms

Reversible: No

Hardware: None

Material composition: Lycra (Nylon 80% and 20%) with lining

Colours: Available in various colours

RAINBOW FRILL

Description: One shoulder tie one piece.

Reversible: Optional

Hardware: None

Material composition: Lycra (Nylon 80% and 20%) with lining

Colours: Available in various colours



THE POPSICLE COLLECTION

KIDS SWIMWEAR

BODYSWEET SUMMER 2021



APPLE POP

Description: Rash vest 1 piece with zip at the back.

Reversible: No

Hardware: Zipper

Material composition: Lycra (Nylon 80% and 20%) with lining

Colours: Available in various colours

PINK ICE-CREAM

Description: Shoulder ties one piece

Reversible: Optional

Hardware: No

Material composition: Lycra (Nylon 80% and 20%) with lining

Colours: Available in various colours



THE POPSICLE COLLECTION

KIDS SWIMWEAR

BODYSWEET SUMMER 2021



TANGERINE FIZZ

Description: One piece with front tie and medium back

Reversible: No

Hardware: None

Material composition: Lycra (Nylon 80% and 20%) with lining

Colours: Available in various colours

4. SIZE GUIDE - LADIES



SMALL

SIZE 8 - 10

Fit to bust = 87cm - 90cm

Fit to hips = 96cm - 99cm



MEDIUM

SIZE 12 - 14

Fit to bust = 100cm - 105cm

Fit to hips = 104cm - 109cm



LARGE

SIZE 16-18

Fit to bust = 105cm - 110cm

Fit to hips = 114cm - 119cm



ONE X

SIZE 20 - 22

Fit to bust = 116cm - 122cm

Fit to hips = 125cm - 131cm



TWO X

SIZE 24 - 26

Fit to bust = 128cm - 134cm

Fit to hips = 137cm - 143cm

4. SIZE GUIDE - KIDS



4-5 YEARS

Fit to bust = 56cm - 58cm
Fit to hips = 60cm - 63cm

5-6 YEARS

Fit to bust = 58cm - 60cm
Fit to hips = 63cm - 66cm



7-8 YEARS

Fit to bust = 62cm - 64cm
Fit to hips = 69cm - 72cm

9-10 YEARS

Fit to bust = 67cm - 70cm
Fit to hips = 75cm - 78cm



11-12 YEARS

Fit to bust = 73cm - 76cm
Fit to hips = 81cm - 84cm

5. CONTACT DETAILS

Please feel free to contact us should you have any enquires .

Lauren

078 669 9522

lauren@bodysweet.co.za

Nadine

084 605 3864

nadine@bodysweet.co.za



BODYSWEET

EVERY "BODY" WELCOME